



MONTHLY MEMBERSHIP PROGRESS REPORT

District 325A2

Results as of: 5/31/2017

GMT: NAZMUL HAQUE

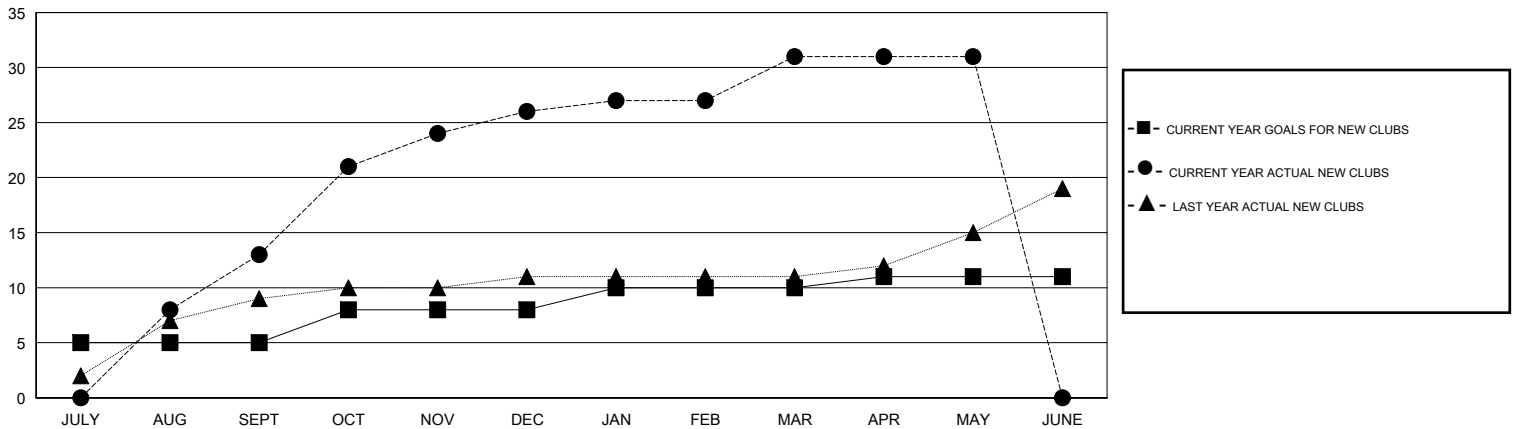
LOCATION NEPAL

GMT CA

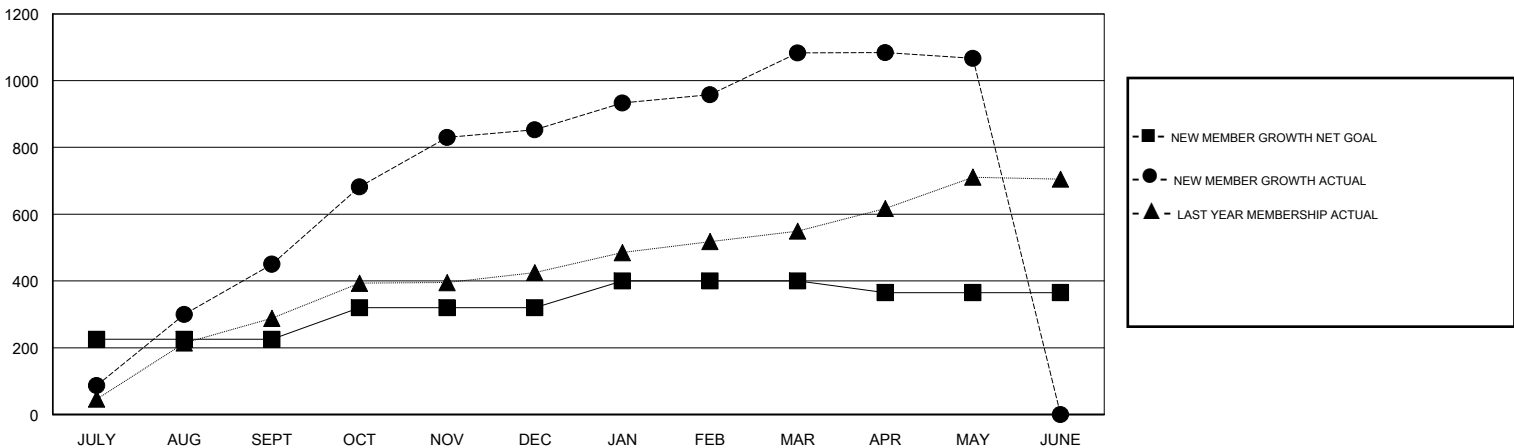
| Clubs | | | |
|-----------------------|---------------|-----------|---------------|
| RESULTS FOR 2016-2017 | | | |
| QUARTER | NEW CLUB GOAL | NEW CLUBS | DROPPED CLUBS |
| JULY/AUG/SEPT | 5 | 13 | 0 |
| OCT/NOV/DEC | 3 | 13 | 1 |
| JAN/FEB/MAR | 2 | 5 | 0 |
| APR/MAY/JUNE | 1 | 0 | 0 |

| Members | | | |
|-----------------------|--|--|--|
| RESULTS FOR 2016-2017 | | | |
| QUARTER | NEW MEMBER GROWTH NET GOAL (not reinstated or transfers) | NEW MEMBER GROWTH ACTUAL (not reinstated or transfers) | DROPPED MEMBERS ACTUAL (including transfers) |
| JULY/AUG/SEPT | 225 | 534 | 84 |
| OCT/NOV/DEC | 95 | 515 | 112 |
| JAN/FEB/MAR | 80 | 283 | 53 |
| APR/MAY/JUNE | -35 | 63 | 79 |

GOALS AND ACTUAL NEW CLUBS CUMULATIVE



GOALS AND ACTUAL MEMBERS CUMULATIVE



| | | | |
|------------------|--|---------------------------------|----------------|
| DROPPED CLUBS: 1 | 114 CLUBS OF 154 ADDED 1 OR MORE NEW MEMBERS | <u>GENDER DISTRIBUTION</u> | |
| DROPPED MEMBERS | | MALE | 3,196 (74.92%) |
| DECEASED | 1 | FEMALE | 1,070 (25.08%) |
| CLUB CANCELLED | 4 | TOTAL FAMILY UNIT MEMBERS | 2,410 |
| OTHER | 323 | FAMILY MEMBERS PAYING HALF DUES | 1,493 |
| TOTAL | 328 | | |

[CLICK HERE FOR CUMULATIVE MEMBERSHIP DATA](#)